



Calgary SMI Commercial Real Estate Limited

1636, 246 Stewart Green SW
Calgary, Alberta, T2P 2T3
www.smicommercial.com

Contact:
Mathieu Déry
(403) 862-0799
mdery@smicommercial.com

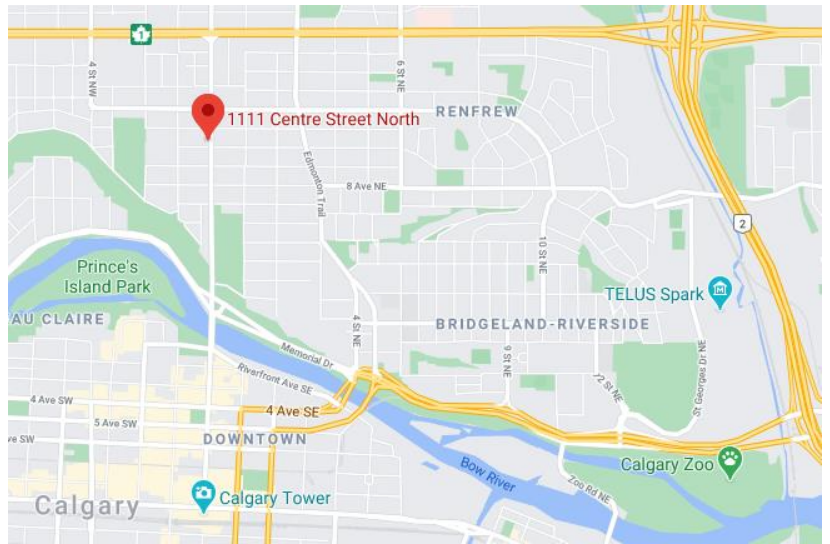
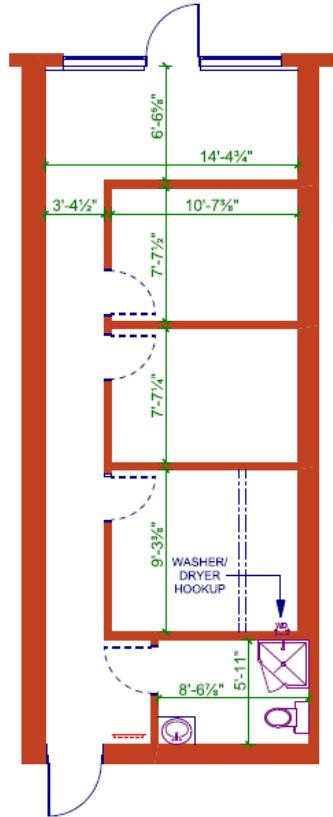
SMI Commercial • Retail Division

Retail Lease Crescent Plaza 1111 Centre Street N



633 sq. ft.

- Rare small North location
- C-Cor2 zoning (Commercial - Corridor 2)
- former massage studio – wide variety of alternate retail uses possible
- Ample parking
- High visibility to 23,000 vehicles per day (2018)
- Available Immediately



\$39.00 Net Rent

\$23.29 Op. Cost
(2020 Budget)
[GST additional on above & Tenant pays separate utilities]

Click or type for Virtual tour: <https://youtu.be/RIOXbaPDXd8>



CREATING VALUE THROUGH RELATIONSHIPS