



SMI Commercial • Retail Division

Calgary SMI Commercial Real Estate Limited
Suite 107,
825 – 8th Avenue S.W.
Calgary, Alberta, T2P 2T3

FAX: (403) 263-2567

www.smicommercial.com

Contact:

Mathieu Déry

(403) 266-0777

mdery@smicommercial.com



Retail Lease

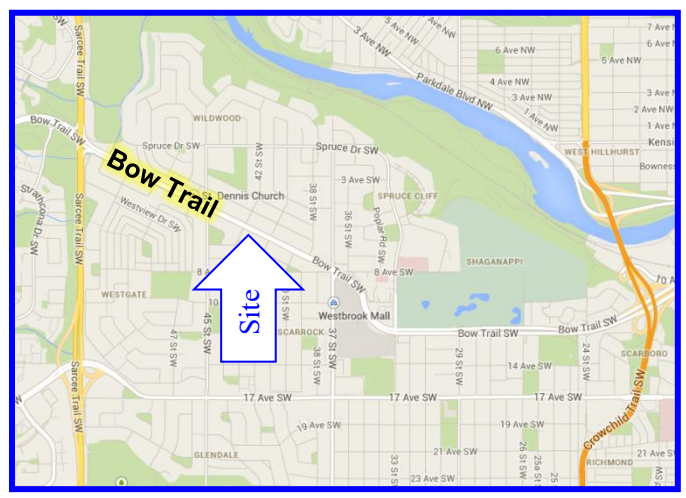
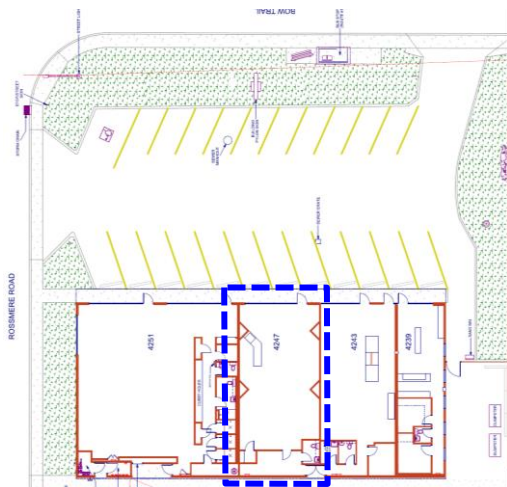
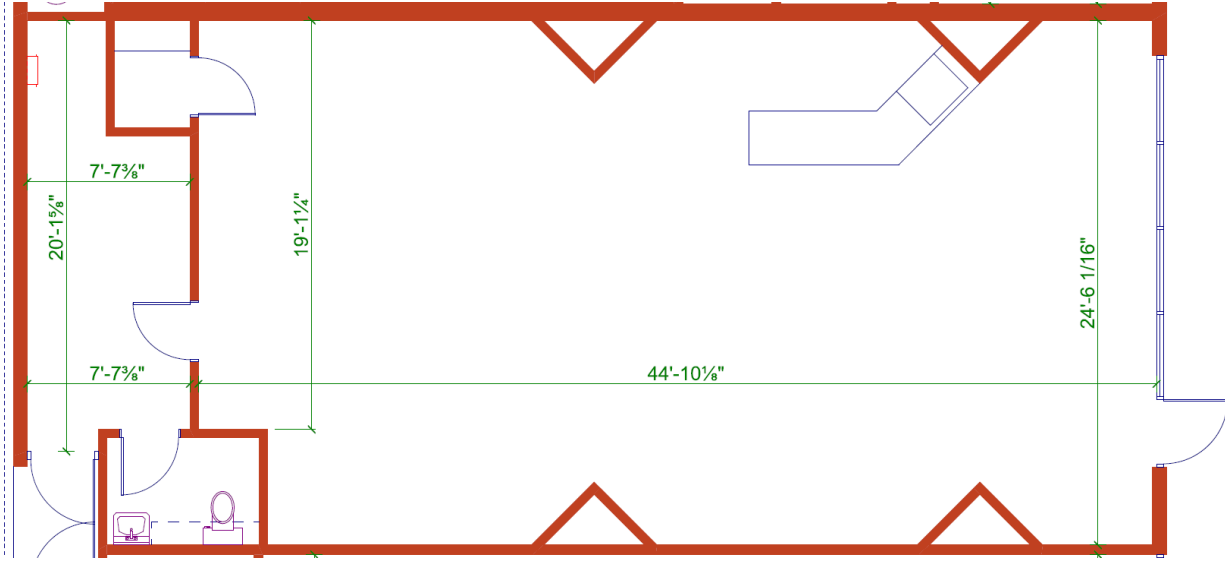
Bow Trail Plaza 4247 Bow Trail SW



1,368 sq. ft.
\$39.00 net

\$16.10 op. (2022)

- Pylon Sign: \$200 per double-sided panel per month
- Rare SW location
- C-N2 zoning (Commercial-Neighbourhood 2)
- Variety of retail uses incl. liquor
- Ample parking
- High visibility to 39,000 vehicles per day (2019)
- Available immediately



Click or type for YouTube Virtual tour: <https://youtu.be/rTwDodthLaM>



CREATING VALUE THROUGH RELATIONSHIPS