



SMI Commercial • Retail Division

Retail Sublease

Calgary SMI Commercial Real Estate Limited
Suite 107,
825 – 8th Avenue S.W.
Calgary, Alberta, T2P 2T3
FAX: (403) 263-2567
www.smicommercial.com

Contact:
Mathieu Déry
(403) 266-0777
mdery@smicommercial.com

Bow Trail Plaza

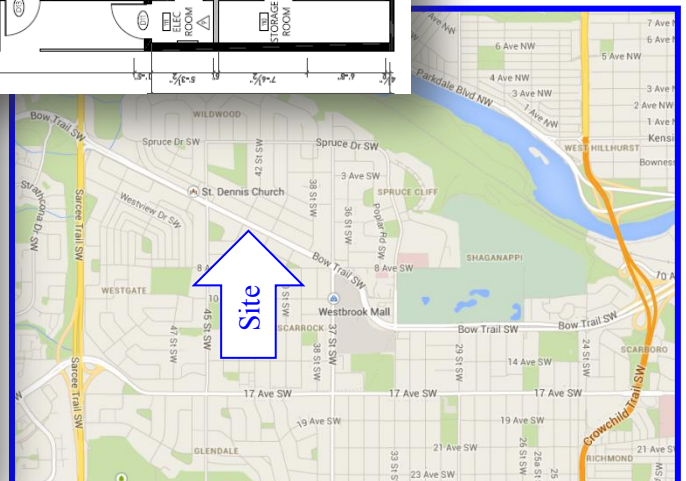
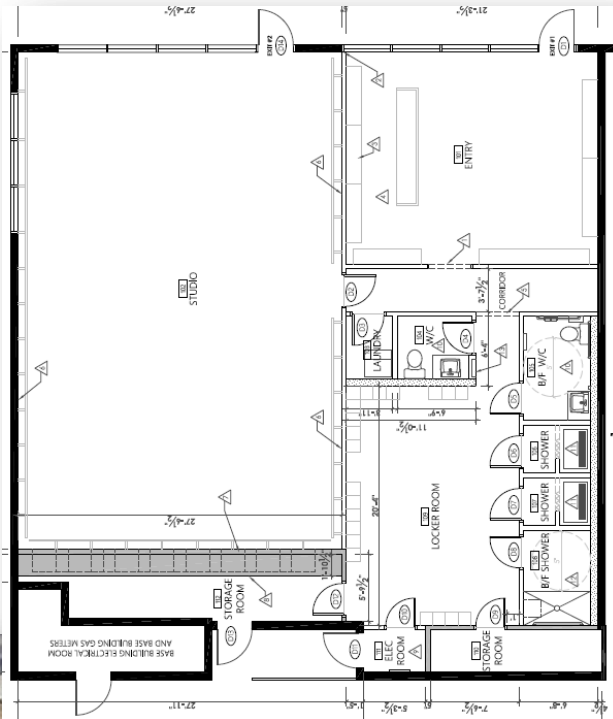
4251 Bow Trail SW



2,519 sq. ft.
\$39.00 net

\$15.65 op. (2020)

- Pylon Sign: \$200 per double-sided panel per month
- Rare SW location
- C-N2 zoning (Commercial-Neighbourhood 2)
- Fitness/Dance studio or variety of retail uses
- Ample parking
- High visibility to 39,000 vehicles per day (2019)
- Available immediately



Click or type for Virtual tour: <https://youtu.be/dOAMhpTxsj0>



CREATING VALUE THROUGH RELATIONSHIPS